

Glass Lined Reactors

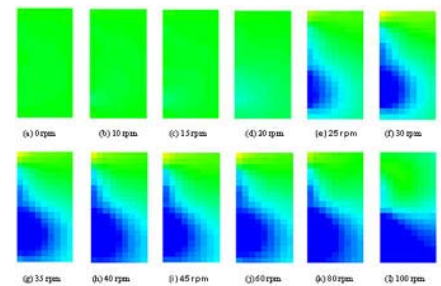
On-line monitoring of a solids distribution in a glass lined reactor

Background and Objectives

- ITS have developed a linear ERT sensor.
- Glass lined vessels are widely used in pharmaceutical manufacturing.
- Little instrumentation on these reactors.
- Glass lined baffle fabricated with 10 platinum electrodes.
- Tested in Pfaudler-Balfour AE630 pilot reactor at Leven, Fife.
- Measured axial solids distribution.
- Identified 'just suspended speed'.

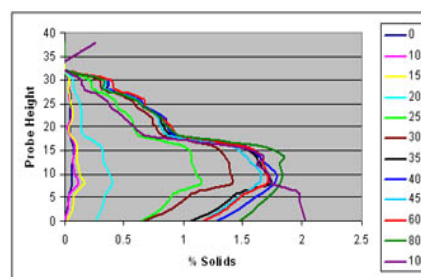


Tomographic images showing axial solids distribution within reactor:



Results

- Solids lifted from reactor base as agitation speed is increased.
- Averaging pixel rows gives average axial solids distributions as shown on the graph.



For more information contact:

Emeline Bodard
 Industrial Tomography Systems Plc
 Phone: +44 (0) 161 832 9085
 Fax: +44 (0) 161 839 5195
 Email: emeline.bodard@itoms.com

Industrial Tomography Systems plc
 Speakers House, 39 Deansgate
 Manchester
 M3 2BA
 Tel: +44 (161) 832 9297
 Fax: +44 (161) 839 5195
sales.support@itoms.com